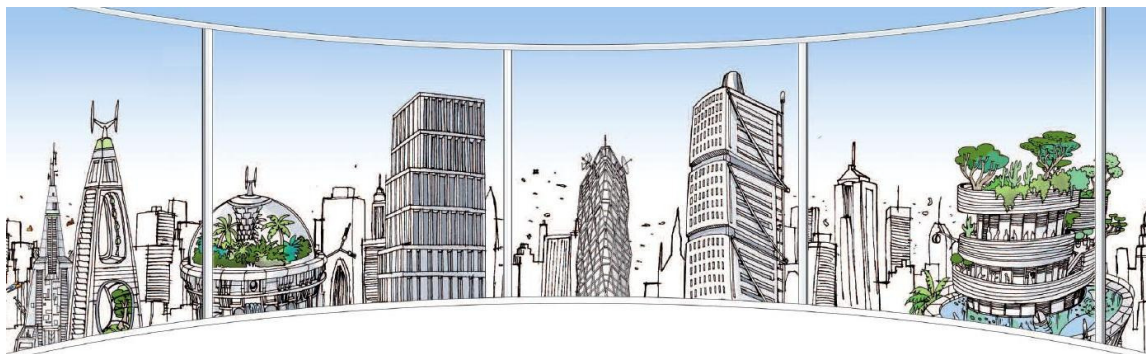


## DATABASE



Suggested duration: 3 Days

Price: 500 USD per Attendee

Location: Waltham, MA

Requirements:

- Network Fundamentals
- Relational Database Structure
- SQL Language
- ODBC Connections
- Pc Environment
- MS Excel-Access

### PART 1

This course is for database administrators who would like to be self sufficient using Board 7 to design, implement and maintain databases. The course will cover the fundamental concepts of software install and uninstall as well as the main LAN or WAN architecture construction mechanisms and the Database and Capsules architecture. You will know the problems of security administration and data access as well as that of licensing.

### PART 2

The course is for database administrations who would like to be independent in the design, implementation and maintenance of the databases in the Board version 7 environment. The class will cover the fundamental mechanism of database construction and loading of error troubleshooting, of security profiles management and all the operations needed to implement all aspects of the database, entities, relationships, cubes.



This can then be put into practice on a small data set to implement a sales analysis application managing multiple data sources.

## DAY 1

### INTRODUCTION

- Technical introduction
- Hardware Architecture
- Application Architecture
- System Requirements

### LICENSES

- Creation and Certification
- Client and Server licenses
- Topology

### BOARD SERVICE

- Installation & Configuration
- Users & Profiles
- Authentication
- System Manager
- Tips

### THE DATABASE (Fundamentals)

- System directory
- Access Errors
- Fundamental Structures

### THE DATABASE (Security)

- Profile definition
- Infocube access
- Hierarchies access

### THE DATABASE

- Creation
- Time Entities
- Custom Time Entities

## DAY 2

### THE DATABASE (Entities)

- Definition
- Characteristic parameters
- Modification & Monitoring

### THE DATABASE (Relationships)

- Formulation & tree structure
- Analytical, united monitoring
- The Scan & aggregation errors
- Normalization

### THE DATABASE (Infocubes)

- Definitions MOLAP-ROLAP
- Characteristic parameters
- Sparsity and versions
- Errors
- The CheckSum

### SPARSE DATA STRUCTURES

- Definition
- Advanced administration

## DAY 3

### THE DATABASE (Datareader)

- Configuration
- Monitoring of data load
- Blank, Append and Replace options
- ASCII, ODBC & OLEDB
- ODBO
- The ETL
- Batch reader & multiple data load
- The Across Function and Excel file
- The Drill Through

### DATABASE OPTIMIZATION

- Optimization & Repair
- Database File & Back up
- Redundant systems

### ROLAP TECHNOLOGY

- Dual Engine
- Opportunity & Limitations
- Creation & Usage of ROLAP infocubes
- ROLAP & Write Back